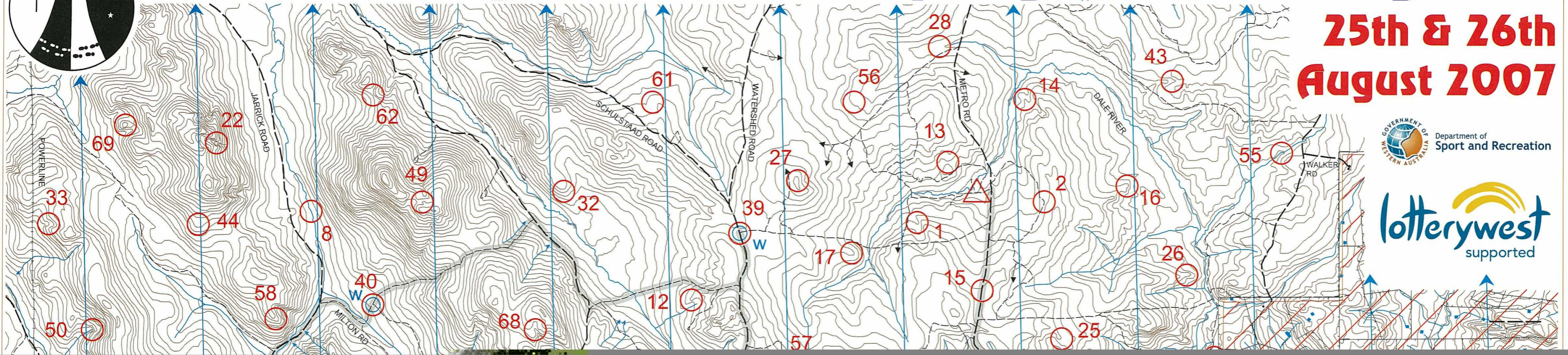


The Metrological - WARA Spring 24 Hour Rogaine

**25th & 26th
August 2007**



The Metrological. WARA Spring 24 Hour Rogaine. 25 & 26 August 2007

No.	Description	Points	No.	Description	Points	Important Information
1	The gully	20	37	The track junction (water)	50	Control Cards From 1130 Saturday
2	The motocross track, eastern bend, 30m at 50°	20	38	The track junction (water)	50	
3	The northern watercourse junction	20	39	The track junction (water)	50	Briefing 1145 Saturday
4	The spur	20	40	The track junction (water)	50	
5	The knoll	20	41	The minor track, bend (water)	50	Start 1200 Saturday
6	The gully	20	42	The track, west side, on sign, near crest (water)	50	
7	The gully	20				Finish 1200 Sunday
8	The watercourse	20	43	The gully	60	
9	The track and watercourse crossing	20	44	The spur, broad	60	Hash House Opens at 1600 Sat Closes by 1300 Sun
10	The watercourse	20	45	The spur	60	
11	The knoll, broad	20	46	The watercourse junction	60	Sunset 1755 Sat
12	The spur	20	47	The spur	60	
			48	The spur	60	Moonrise 1428 Sat
13	The saddle	30	49	A rock surface 30m x 50m, north west side	70	
14	The spur	30	50	The watercourse, head of	70	Sunrise 0640 Sun
15	A blazed tree, "BR 85 1", 50m at 270°	30	51	The knoll	70	
16	The spur	30	52	The gully	70	Moonset 0511 Sun
17	The spur	30	53	The watercourse junction	70	
18	The spur	30	54	The eastern watercourse	70	Late Penalty 10 points per minute or part minute. LATE (no points) later than 1230 Sunday
19	The knoll	30				
20	The spur	30	55	The watercourse	80	Controls Used 72
21	The spur	30	56	A clearing, 300 x 300m, southwestern edge	80	
22	The gully	30	57	The knoll	80	Total Points 3780
23	The watercourse	30	58	The spur	80	
24	A knoll	30	59	The gully, shallow	80	Water Drops: At Controls 37,38,39,40,41 and 42 If you are injured please make your way to a water drop or a patrolled road and wait there for help.
			60	The spur	80	
25	The spur	40	61	A 300x150m clearing/rock surface, north side	90	Patrolled Roads are shown on the map: Sections of Metro Rd, McCallum Rd, Watershed Rd, Randall Rd, Jarick Rd and Milton Rd, also unnamed tracks from near 48 to Metro Rd, and from 40 to 39.
26	The spur	40	62	The saddle	90	
27	The knoll	40	63	The gully	90	
28	The gully, broad	40	64	The gully, shallow	90	
29	A knoll, rocky, southeastern side	40	65	The gully, broad, upper part	90	
30	The watercourse, head of	40	66	The gully, head of	90	
31	The gully	40				
32	The broad spur, on the crest of an overgrown track	40	67	The northern spur	100	
33	The gully	40	68	The gully, bend	100	
34	The saddle	40	69	The knoll	100	
35	The spur	40	70	The summit	100	
36	The saddle	40	71	The watercourse junction	100	
			72	The knoll	100	